



NanoDeflect : top-tier laser interception in a sleek, portable design

Is a kind of using laser remote voice interception technology , relative to the traditional microphone interception , voice laser listening technology by laser coherent detection or laser speckle imaging technology , the sound, the source near the target surface vibration into audio signal, in long distance without contact voice listening.

Advantages use :

- The actual use in the scene, implements the small and medium-sized distance voice interception function
- Small size, flexible and portable
- Rapid deployment
- Camouflage hidden features
- Only a host and a mobile phone can complete all kinds of technical investigation and security monitoring of fixed-point interception task.

Head Office: Level 22, Boulevard Plaza,
Tower 2, Office 12, Downtown Dubai, UAE
Email : info@quantechworld.com

Product characteristics

1. Integrated optical chip technology, break through the volume and weight limit, to achieve small size, light weight, easy to carry the effect.
2. Host + mobile phone + headphone mode, to achieve fast sound interception, simple operation, highly hidden.
3. The core sound interception algorithm breaks the limit of the conventional sound interception target (paper towel boxes, disposable paper cups and other objects), and can pick up the sound of coats, shirts, human throat and other vocal parts.
4. Simple operation, fast deployment, that is, ready to use.
5. The laser power is small, the human eye is safe, not easy to be detected and counter.

Application

1. Fixed-point monitoring of suspicious targets in key security areas.(Airport, station)



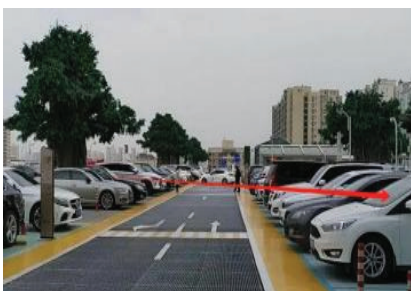
2. Technical investigation of suspicious personnel in public places.(Shopping malls, squares, restaurants, cafes)



3. Active monitoring of special areas.(Prison, customs, border)



4. Car sound interception.(Car-person, car-car, person-car)



Head Office: Level 22, Boulevard Plaza,
Tower 2, Office 12, Downtown Dubai, UAE
Email : info@quantechworld.com

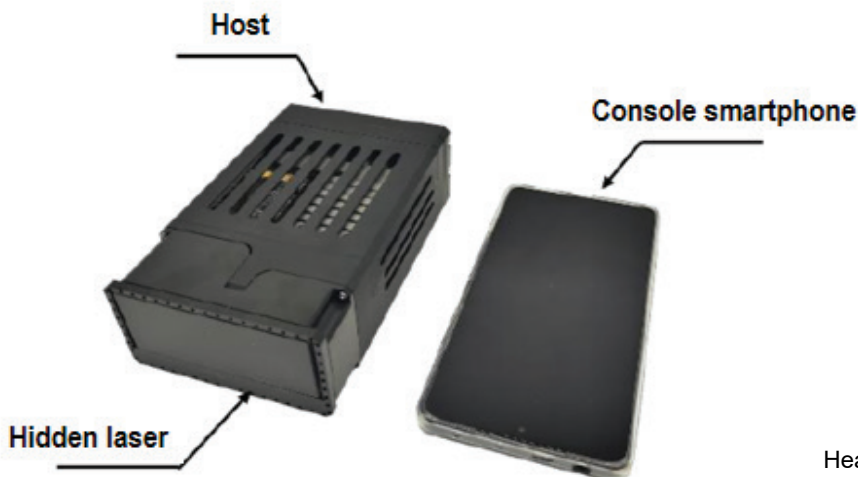
Technical Data

Parameters

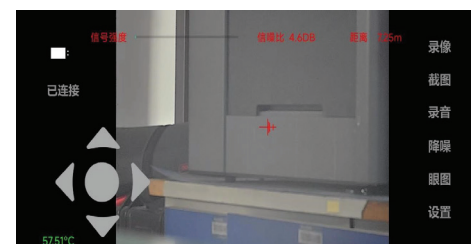
1. Interception distance : 5m-40m
2. Size : 145mm × 90mm × 45mm
3. Weight : 0.9kg
4. Read the rate : >90%@65dB
5. Laser power : Rated at 10mw (± 2mw)
6. Pick up the range : 60dB (within 3m)
7. Working temperature : -20°C-70°C
8. Power supply interface : Uniform Type-C
9. Display control terminal : cellphone

Devices

ND-24IX Device



Control in Cellphone



Head Office: Level 22, Boulevard Plaza,
Tower 2, Office 12, Downtown Dubai, UAE
Email : info@quantechworld.com